



**State of New Jersey
Department of Environmental Protection
Geological Survey**



Information Disclaimer

The State of New Jersey makes great effort to provide secure, accurate and complete information. However, portions of the information contained here may be incorrect or not current.

The State of New Jersey, it's officers, employees or agents shall not be liable for damages or losses of any kind arising out of or in connection with the use or performance of information, including but not limited to, damages or losses caused by reliance upon the accuracy or timeliness of any such information, or damages incurred from the viewing, distributing, or copying of those materials.

The materials and information provided here are provided "as is." No warranty of any kind, implied, expressed, or statutory, including but not limited to the warranties of non-infringement of third party rights, title, merchantability, fitness for a particular purpose, and freedom from computer virus, is given with respect to the contents of this document.

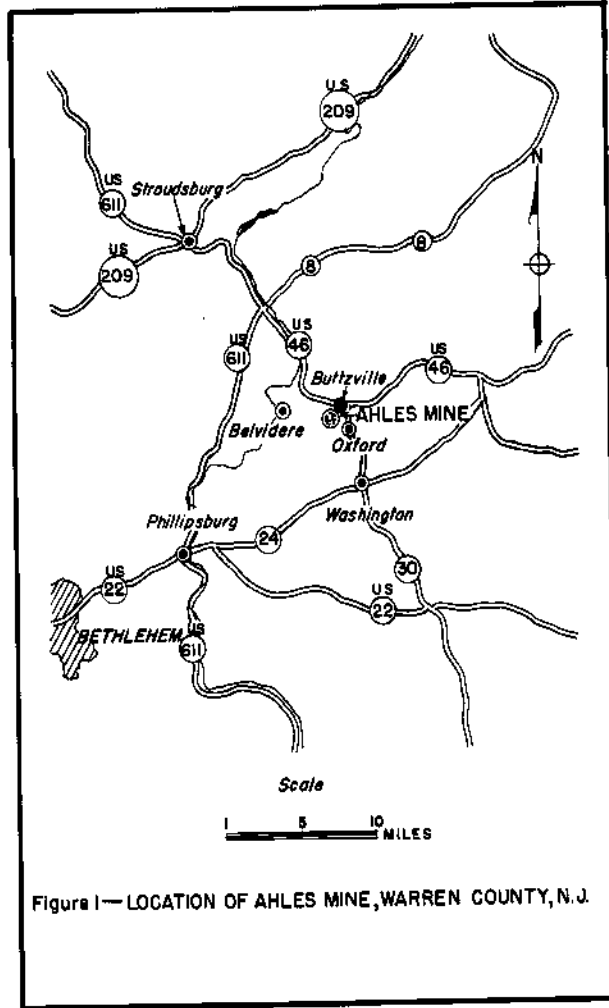


Figure 1—LOCATION OF AHLES MINE, WARREN COUNTY, N. J.

30002

337

14.5:1

300766

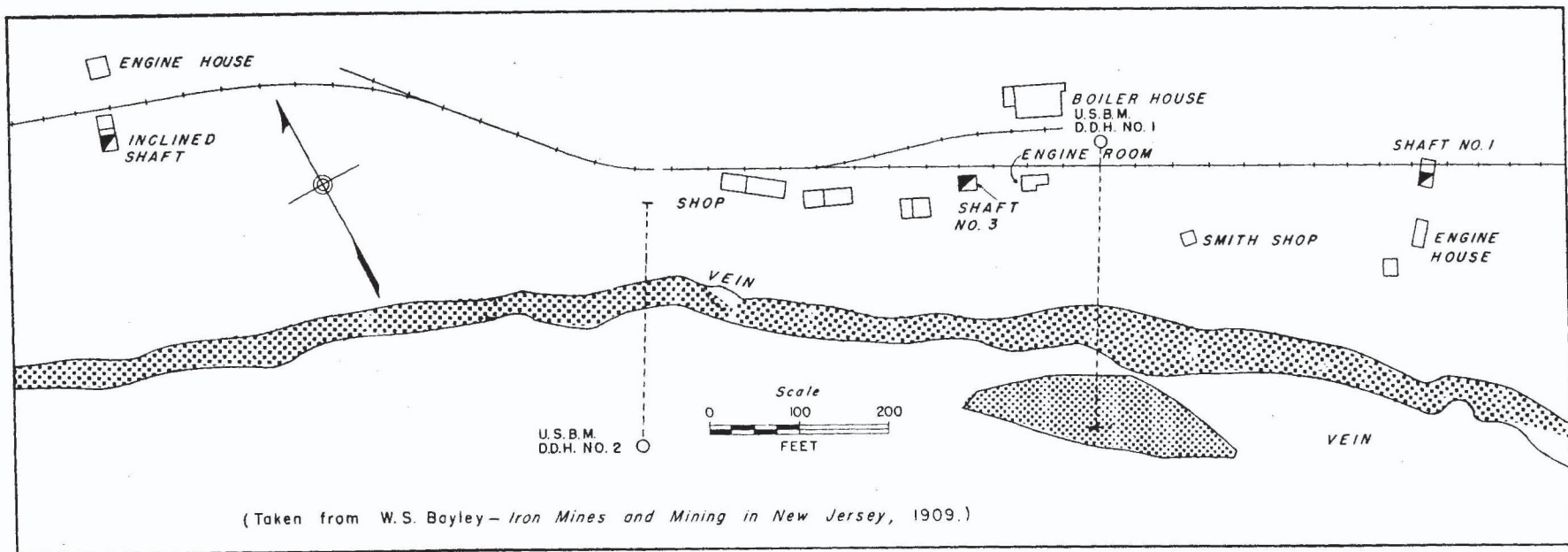
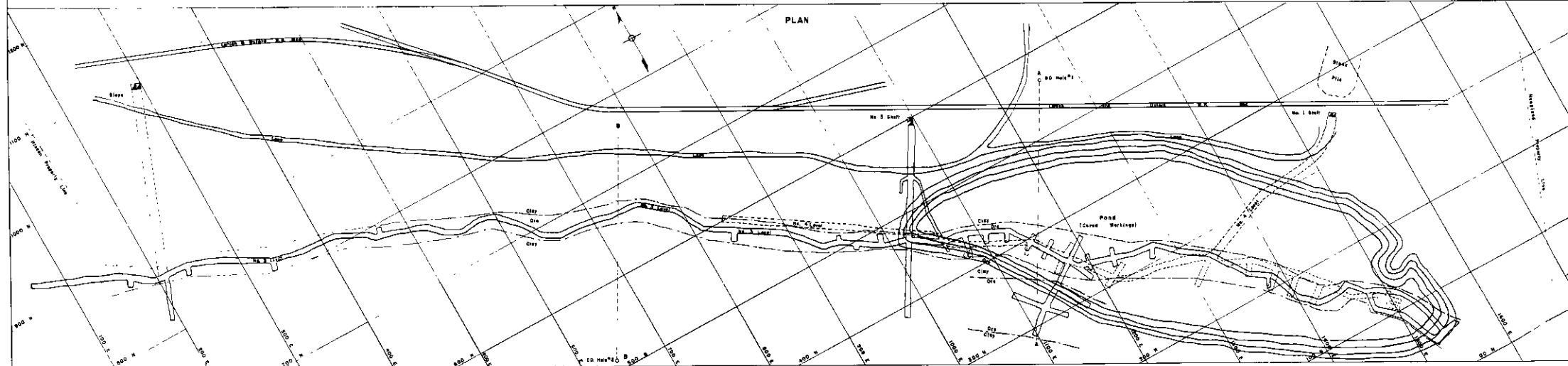
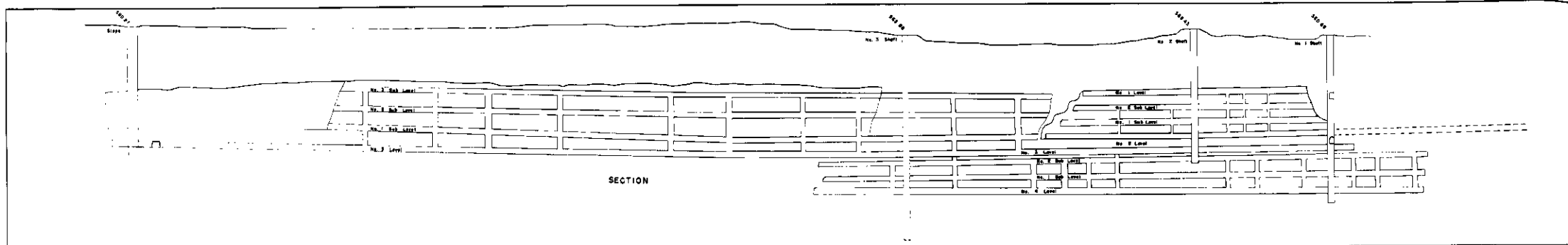


Figure 2. - Surface map of Ahles mine, Basic Iron Ore Company, Oxford furnace, Warren County, N. J.



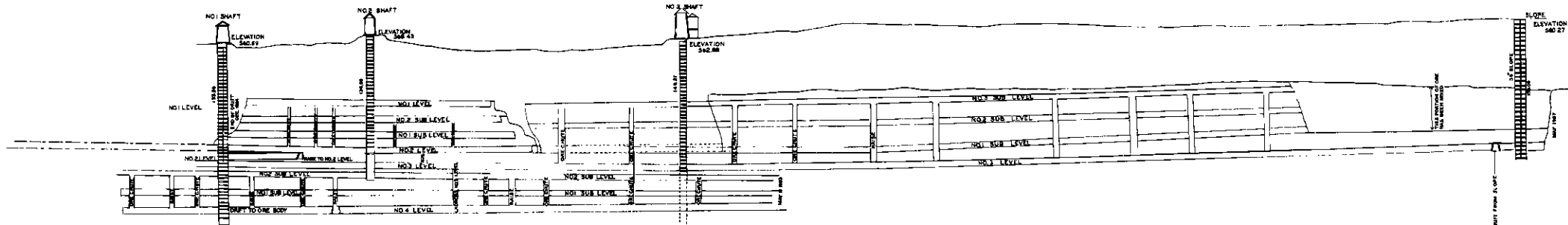
PROJECT 958
 Figure 3-PLAN And SECTION Of AHLES MINE, OXFORD, WARREN COUNTY, N.J.
 From Map Of Basic Iron Ore Co.—Surveyed 6-17-06 and 5-18-07

Scale 60 FEET

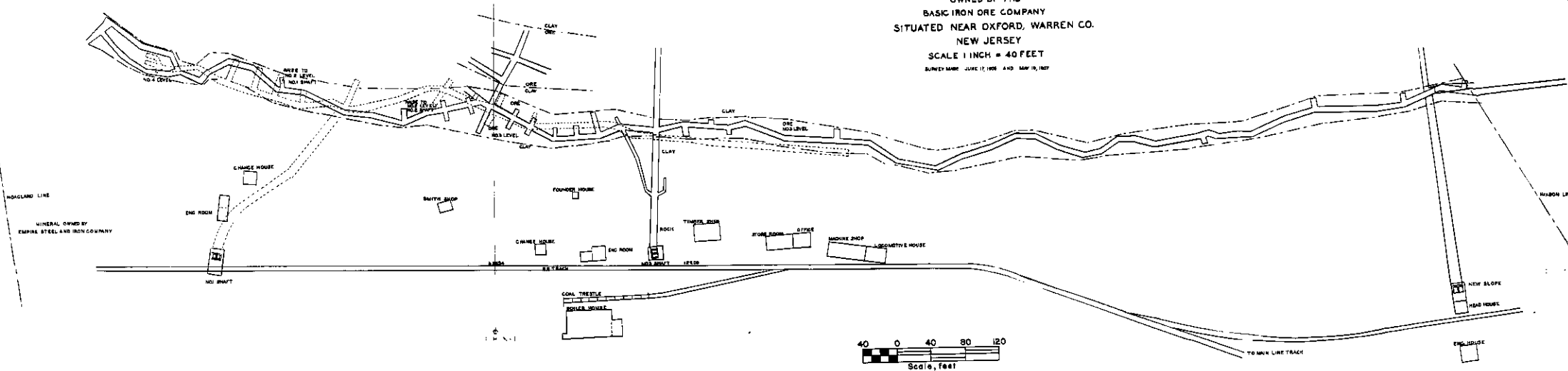
30002

073

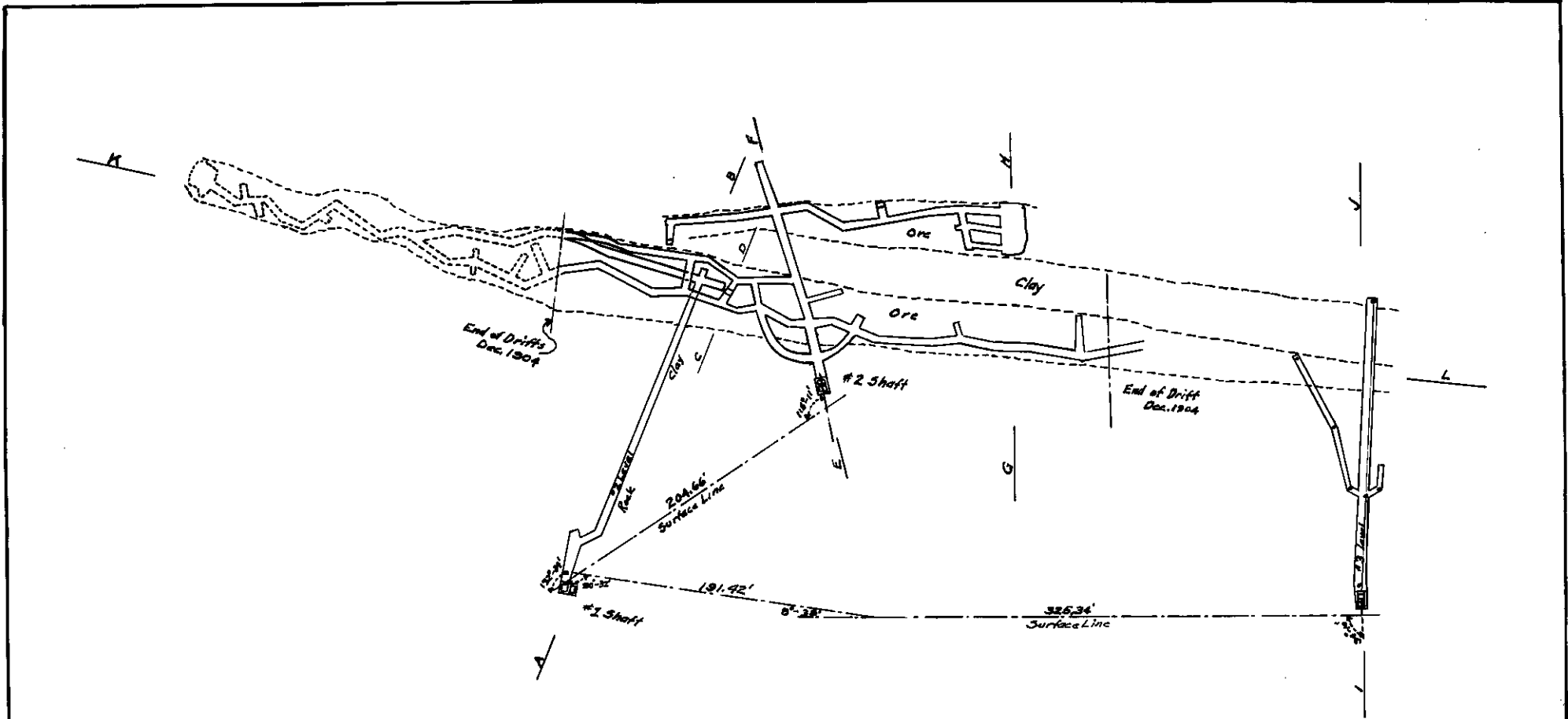
31X 300503



MAP
 SHOWING UNDERGROUND WORKINGS
 AND
 LOCATION OF BUILDINGS
 OWNED BY THE
 BASIC IRON ORE COMPANY
 SITUATED NEAR OXFORD, WARREN CO.
 NEW JERSEY
 SCALE 1 INCH = 40 FEET
 SURVEY MADE JUNE 17, 1906 AND MAY 19, 1907



30002 074 30X 300504



N.B. Original Survey Made Dec. 1904
On a Scale of 1" = 20'

PITTSBURGH COKE & IRON CO.
PITTSBURGH, PA.

PLAN OF NO. 2 LEVEL
BASIC ORE CO'S
AHLES MINE
OXFORD, N.J.

REDUCED IN SCALE FROM ORIGINALS

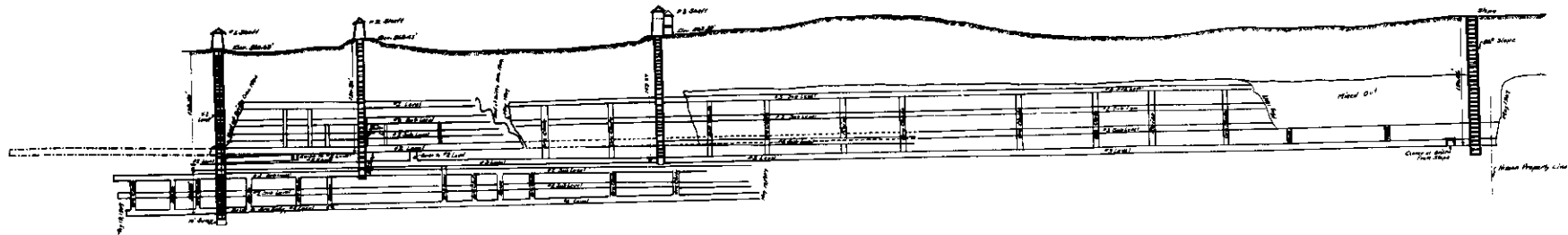
BY	App	DATE: 3-11-23
DR	Rev.	SCALE: 1" = 50'
TR	Rev.	No.
CHKD	Rev.	

C-179

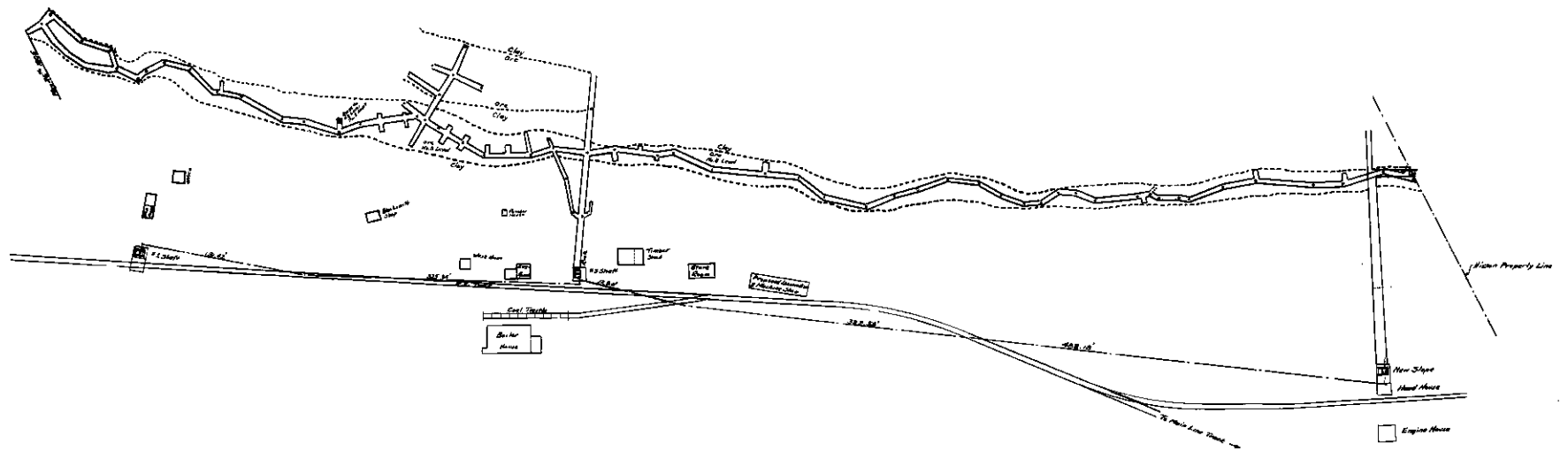
30002

075

14.5:1 300505



LONGITUDINAL SECTION K-L



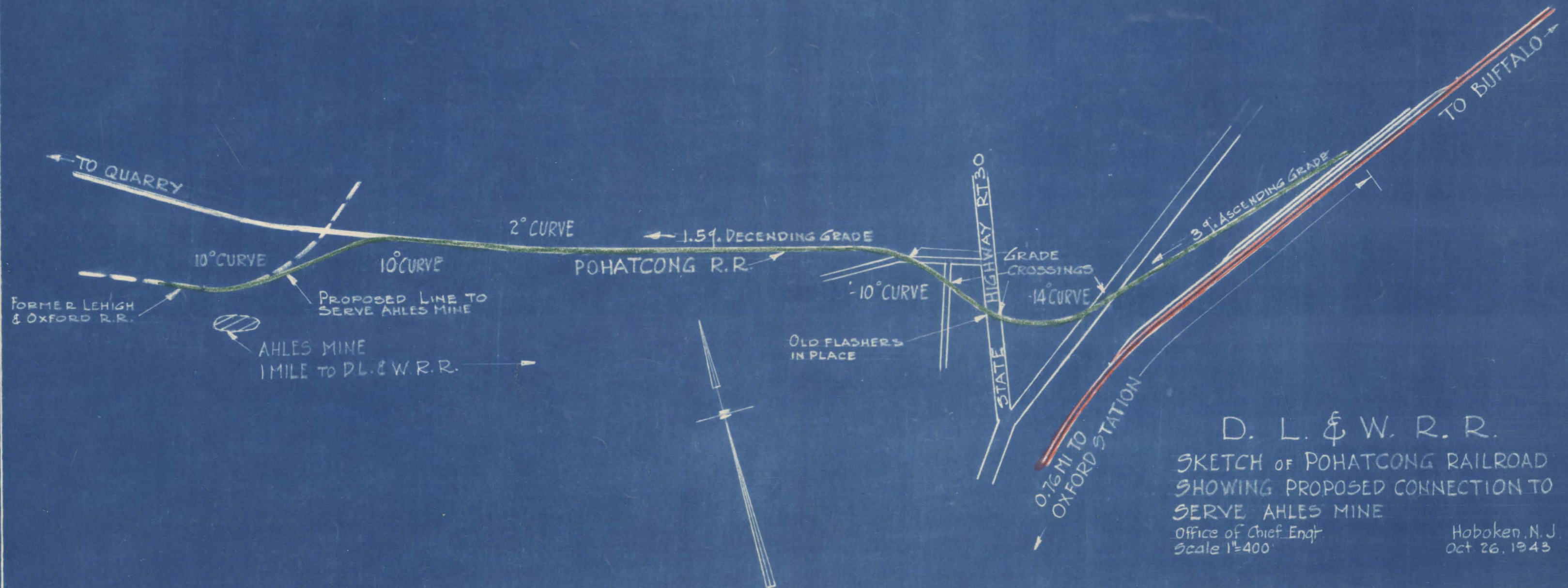
PLAN OF SURFACE # NO. 3 LEVEL

Hogland's Property
 Minerals Owned by
 Empire Steel & Iron Co.



PITTSBURGH COKE & IRON			
PITTSBURGH, PA.			
PLAN & LONGITUDINAL S.			
TASC ORE CO'S			
AHLES MINE			
OXFORD, N.Y.			
REDUCED IN SCALE FROM ORIGINAL			
By	J. A. S.	Drawn	J. A. S.
Ch.	W. S.	Checked	J. A. S.
Co.	W. S.	Noted	
Eng.	W. S.	Noted	

300002 078 | 30Y 300507



D. L. & W. R. R.
 SKETCH OF POHATCONG RAILROAD
 SHOWING PROPOSED CONNECTION TO
 SERVE AHLES MINE
 Office of Chief Engr.
 Scale 1"=400'

Hoboken, N. J.
 Oct. 26, 1943