



**State of New Jersey
Department of Environmental Protection
Geological Survey**



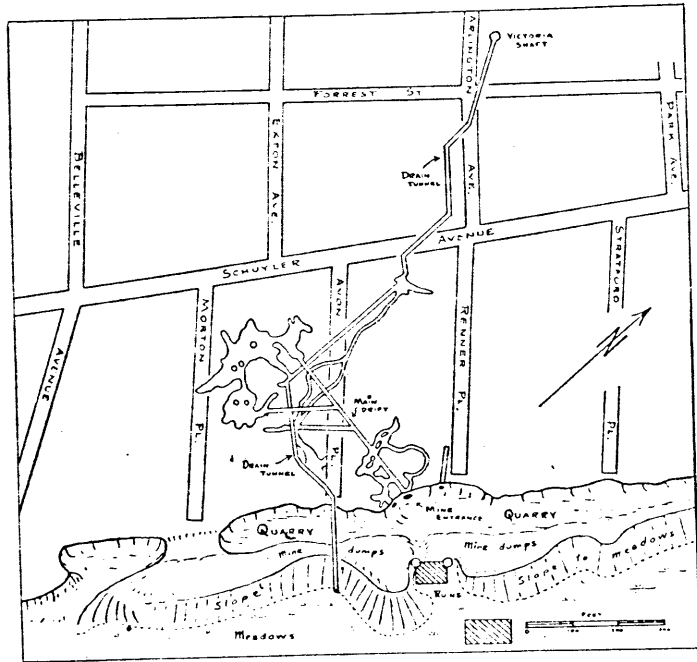
Information Disclaimer

The State of New Jersey makes great effort to provide secure, accurate and complete information. However, portions of the information contained here may be incorrect or not current.

The State of New Jersey, it's officers, employees or agents shall not be liable for damages or losses of any kind arising out of or in connection with the use or performance of information, including but not limited to, damages or losses caused by reliance upon the accuracy or timeliness of any such information, or damages incurred from the viewing, distributing, or copying of those materials.

The materials and information provided here are provided "as is." No warranty of any kind, implied, expressed, or statutory, including but not limited to the warranties of non-infringement of third party rights, title, merchantability, fitness for a particular purpose, and freedom from computer virus, is given with respect to the contents of this document.

BERGEN COUNTY HISTORY

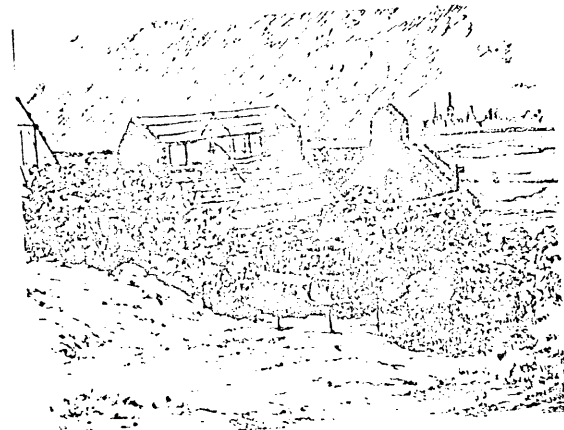


State of New Jersey Department of Environmental Protection

SCHUYLER COPPER MINE

North Arlington, New Jersey

Schuyler Copper Mines



Epilogue

T. N. Glover in "Arlington Copper Mines" gives the following on the late years of the industry.

Remains of mining of a later date can be seen everywhere. "Since I can remember," said Mr. George Baylis, "two companies besides the present one have worked it. The Consolidated Mining Company must have been operating before 1890 and made money, for it worked several years. Then came the New York and New Jersey Mining Company, which was mining as I remember in 1903. It employed 150 men and had eight shafts. Silicate ore and stone were carried away, sometimes to Backonsack river and at others to Belleville. It operated several stampmills and hoisted by whim. The old shaft now goes down about 220 feet and a gallery runs into the hill 1,500 feet. It is a large excavation, probably 8 feet broad and 6 feet high and is old. It is known as the "Victoria shaft." It starts from the Schuyler shaft and runs a little west of north to a point close by Arlington avenue between First and Elm streets. A covering marks the end of it. At no place is it less than 200 feet below the surface. It was near the upper end of this gallery that a gang of workmen one day took out \$10,000 worth of ore. Mr. Westlake, the foreman told me this years ago. When this gallery was pumped out seven or eight years ago, I walked thro' it. I saw copper enough there and some of it native."

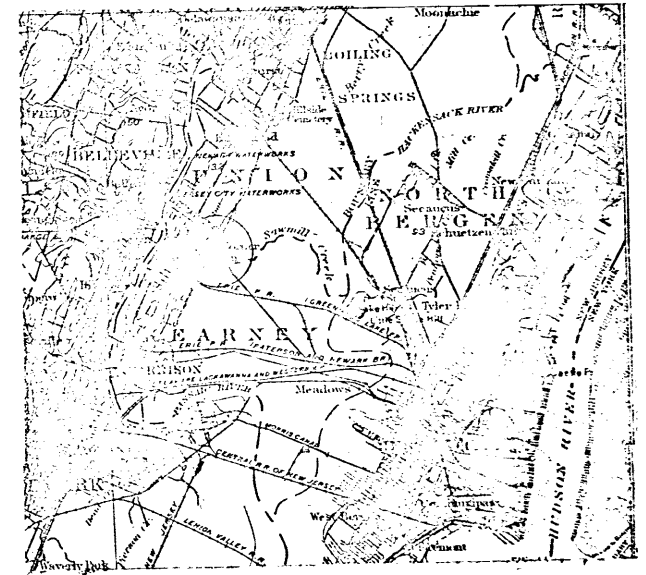


Figure 1 - Map showing location of Arlington Mine

ARLINGTON OR SCHUYLER MINE
HUDSON COUNTY, N.J.

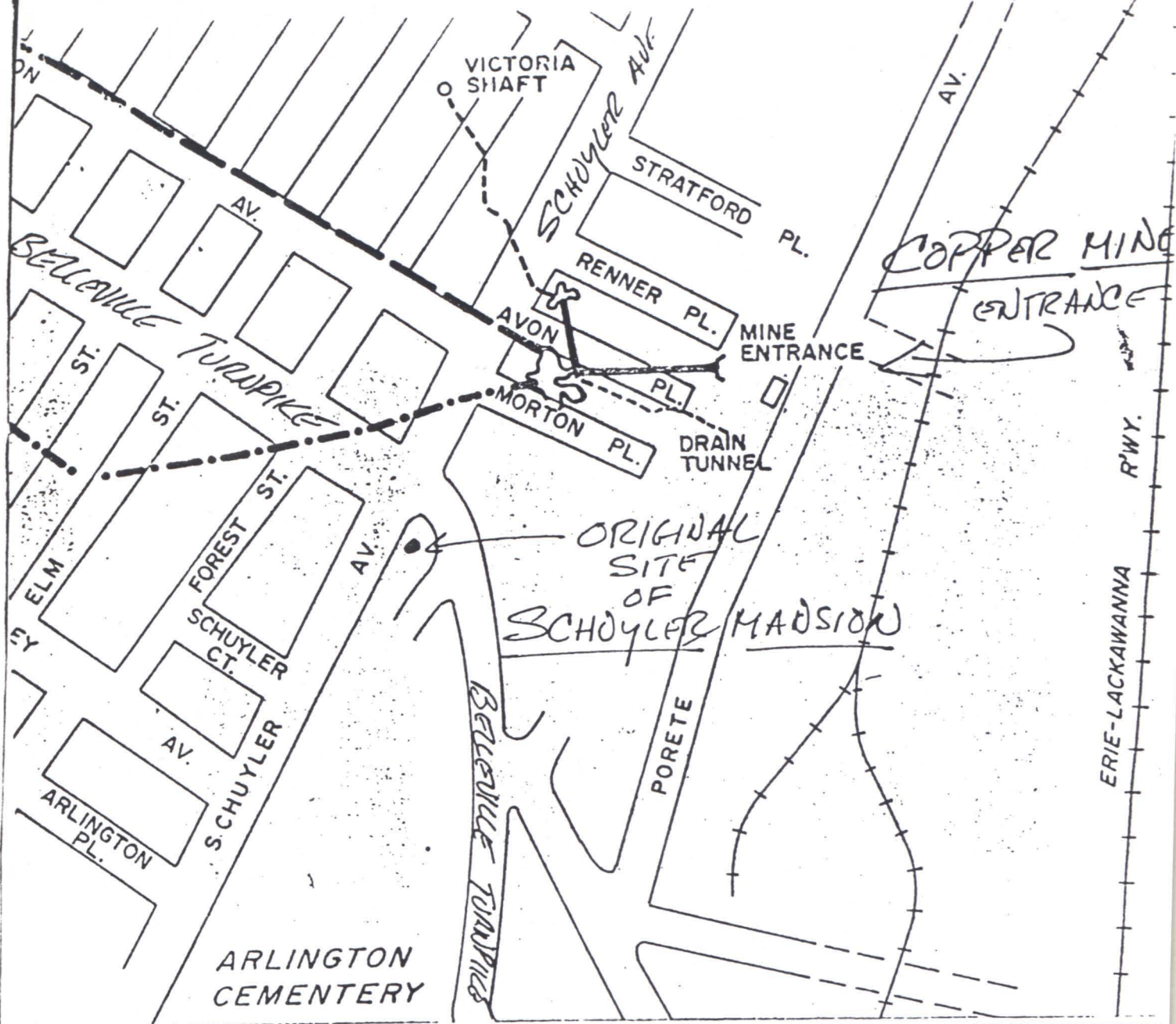
BUMINES

03091

262

12X

333894



TED INGS, Chairman of the Schuyler Foundation is in error. "Fairlawn" the Schuyler Mansion was about the intersection of Passaic Ave. and Belleville Turnpike.

▲ ROUTES SHOWN

K'D The mansion overlooked Passaic River.

DRAWN BY R.P

CHECKED BY R.J.

APPROVED BY

SCALE

DATE JUNE, 1978

But, Schuyler Mines were at location here marked, near Schuyler Ave. and Belleville Turnpike.

PLAN PREPARED FOR SCHUYLER HISTORICAL FOUNDATION

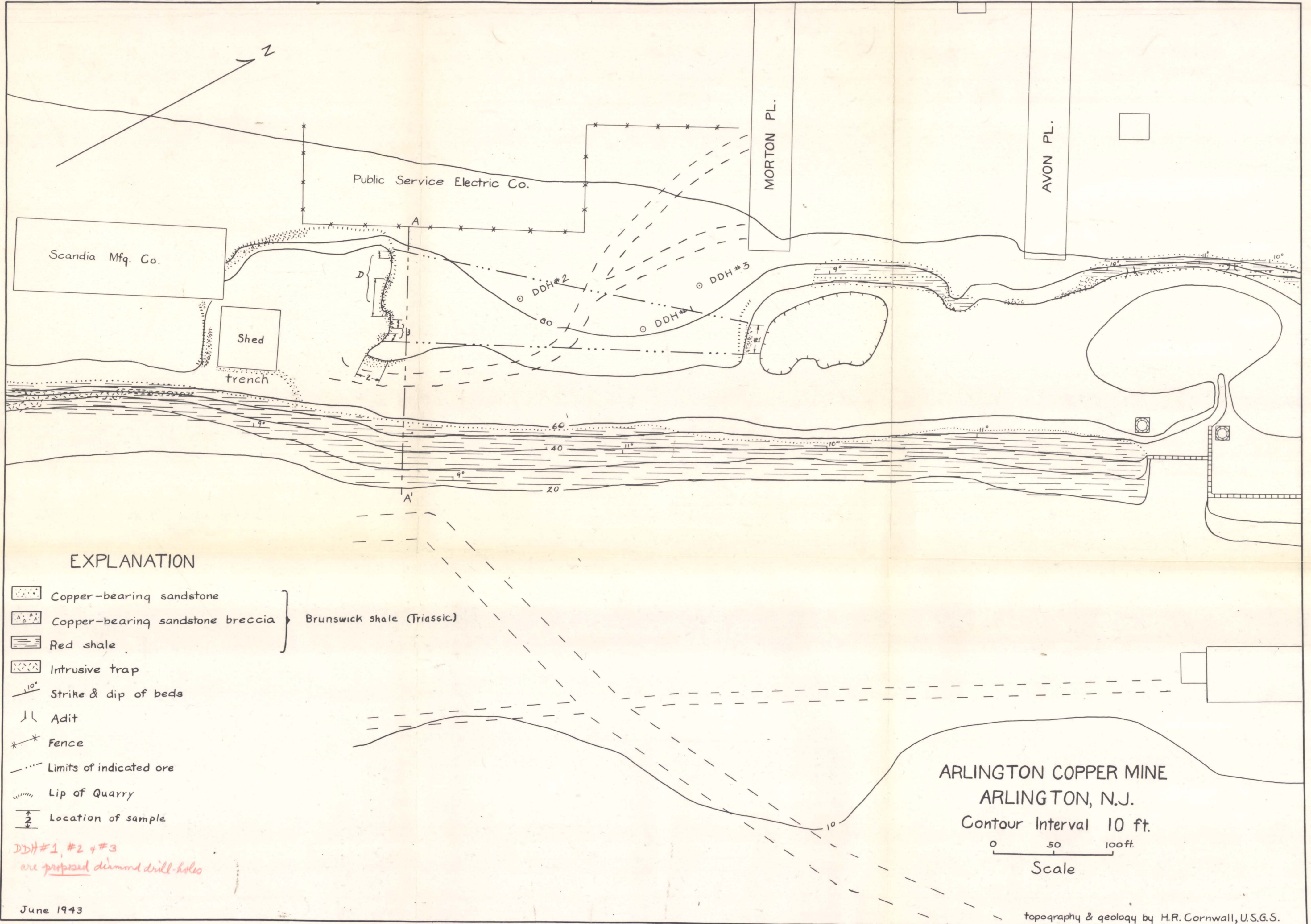


JENNY ENGINEERING
CORPORATION

CONSULTING ENGINEERS
SOUTH ORANGE, N.J.

FILE NO.

DWG. NO. 1 OF 1

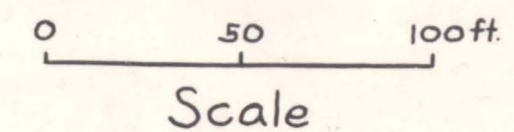


EXPLANATION

- Copper-bearing sandstone
 - Copper-bearing sandstone breccia
 - Red shale
 - Intrusive trap
 - Strike & dip of beds
 - Adit
 - Fence
 - Limits of indicated ore
 - Lip of Quarry
 - Location of sample
- } Brunswick shale (Triassic)

DDH #1, #2 & #3
 are proposed diamond drill-holes

ARLINGTON COPPER MINE
 ARLINGTON, N.J.
 Contour Interval 10 ft.



June 1943

topography & geology by H.R. Cornwall, U.S.G.S.

